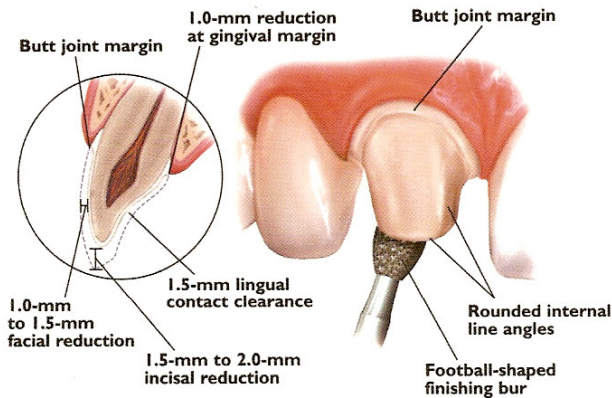


IPS Empress® Preparation Guide

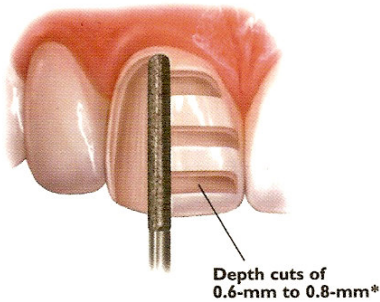
Anterior

ANTERIOR CROWN PREPARATION



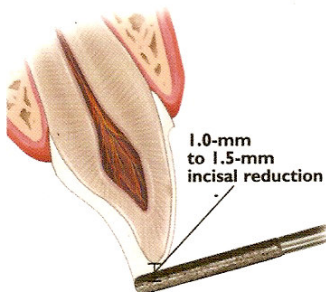
UNIFORM FACIAL PREPARATION

A medium grit, round-ended, diamond bur is used to remove a uniform thickness of facial enamel by joining the depth-cut grooves.



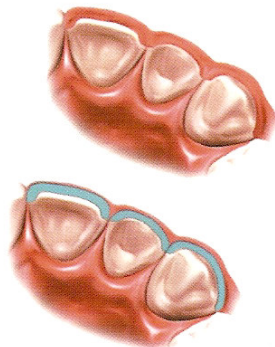
INCISAL PREPARATION

The diamond bur is angled to bevel back the incisal edge.



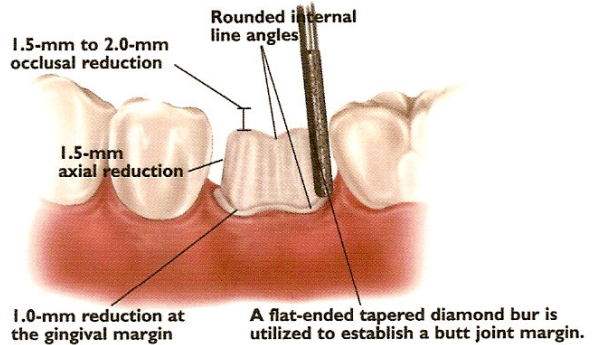
CHAMFER MARGINS

Correct preparation of the chamfer margins interproximally allows the appropriate bulk of porcelain.

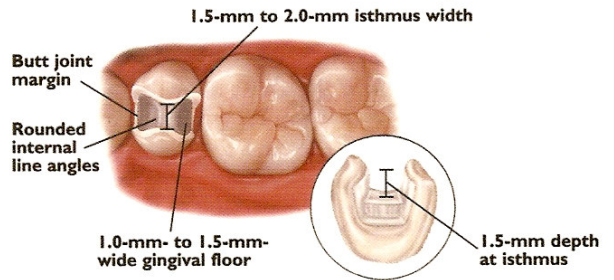


Posterior

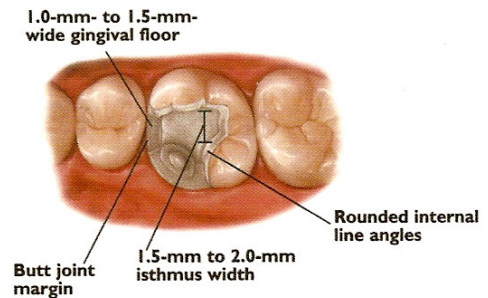
POSTERIOR CROWN PREPARATION



INLAY PREPARATION



ONLAY PREPARATION



IPS Empress® Available From:

100% CUSTOMER SATISFACTION
GUARANTEED!